



■ Swinging door

Used to separate premises with similar temperatures it can be installed in spaces where traffic is dense as a throughway for personnel and small trucks
One or two leaves
Thickness 40 mm
Dimensions:
from 2250x810 mm to 2250x2010 mm

► Options

- kick plate at base of door
- bumper bar in stainless steel
- protective tube at base
- stainless steel frame



■ Flexible door

The flexible door is used to separate premises with similar temperatures and where traffic is dense or where visibility is required.
One or two PVC leaves.
Width:
from 620 to 1100 mm for one leaf
from 1200 to 2200 mm for two leaves
Height:
from 1900 to 2700 mm

► Options

- bichromate galvanized hinges
- frame in Duralinox
- top and bottom parts opaque, or bottom part only
- opaque parts coloured orange, grey or yellow
- rack opening
- stainless steel monoblock door frame
- grey coloured frame



■ Strip curtain

The strip curtain is used to separate premises with similar temperatures and where traffic is dense or where visibility is required.

Extruded transparent PVC strips, individually interchangeable.
Strip dimensions 200 x 2 mm.
50 or 100% overlap

It could also back up a standard door to limit thermal loss during opening.

Dagard can supply non-standard dimensions along with other types of doors: lifting grates, folding or sectional doors, quick roll-up curtains.

This very comprehensive range meets all opening criteria.



Route du stade - 23600 Boussac - France
tél. +33(0)555.82.40.00 - fax. +33(0)555.65.18.54
www.dagard.com - info@dagard.com

Non-contractual document Dagard reserves the right to modify its products without prior notice.

Door Line



Doors to meet your opening requirements



A comprehensive range

Doors play a very important part in any installation. They are resistant to constant opening and closing, to aggressive surrounding environments, to often hard cleaning conditions and to blows caused by passing trolleys and trucks. They meet the stringent resistance and insulation criteria required by industrial cold storage or retail trade areas of activity.

Dagard has available doors with standard facings in powder-coated sheet metal, rock white (near RAL 9002) or ice-pack white (near RAL 9010).

Claddings, on request, can be of stainless steel plate or sheet metal powder-coated with PVDF, coated with PVC film, or with a polyester / PET complex, or of polyester.

Panel faces have received approval for contact with food to comply with European directives 89/109 and 93/43.

Several criteria must be weighed up when selecting a type of door :

Type of door and passageways

The type of door and its mode of opening must be appropriate to the layout of premises and the use.

Clear opening

In order to determine the required dimensions of doors, it is important to check on the use planned for the clear opening (throughway for people, goods and equipment).

Thermal insulation

The doors possess different insulation characteristics. The appropriateness of the type of door must be checked against the constraints of the planned utilization.

Panel face / environment

The type of panel face will be selected depending on the surrounding environment and on whether the door will be used intensively or not.

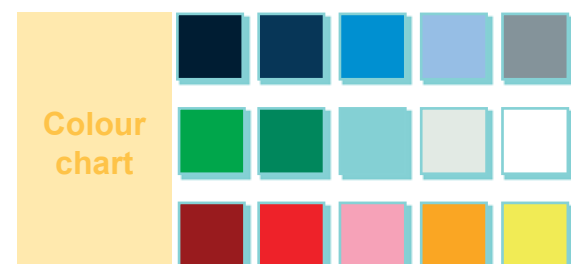
Behaviour in fire

In cases where the enclosure has to meet specific fire regulations, the door must be selected according to criteria of fire reaction and fire resistance.

Specific utilizations

In cases of intensive or specific utilizations, the doors can be fitted with options to enhance their performance or resistance: door kick plates, tubular guards, automatic operations, track openings ...

In order to customize, to identify your work spaces, to make units more attractive, the colour of leaves can be selected from a list of 15 on the colour chart.



Hinged door

Designed for warehouses, processing shops and providing a throughway for personnel, it is used both inside and outside in positive and negative temperature environments.

Injected polyurethane foam insulation
Thickness 60 mm for positive temp.

Thickness 120 mm for negative temp.

Dimensions:

from 850 x 620mm to 2200 x 1500mm

Options

- guard at base of door
- panic bar kit
- rack opening
- handrail
- 24V heater strip
- oculus for positive temperature
- canopy
- organization chart
- stainless steel frame



Alpha Sliding Door

Used inside or outside, it's thermal characteristics make it suitable for storage areas, work rooms, etc. It provides a throughway for personnel and smaller types of trucks.

Injected polyurethane foam insulation
Thickness 60 mm for positive temp.

Thickness 120 mm for negative temp.

Dimensions:

from 1850x950 mm to 2500x2400 mm

Options

- kick plate at base of door
- Surface-mounted key lock with unlocking from inside
- rack opening
- stainless steel track
- protective tube at base
- 24V heater strip
- organization chart
- stainless steel frame



Ultra Sliding Door

The 'Ultra' sliding door acts as a throughway for large industrial trucks and/or in spaces where traffic is dense, e.g. : warehouses, processing shops ...

Its high insulation properties enable it to be used inside and outside alike.

Injected polyurethane foam insulation
Thickness 100 mm for positive temp.

Thickness 150 mm for negative temp.

Dimensions:

from 2500x1600mm to 3200x3200mm

Options

- kick plate at base of door
- Surface-mounted key lock with unlocking from inside
- stainless steel track opening and seating
- stainless steel track
- protective tube at base
- electric automatic operation
- 24V heater strip
- organization chart
- stainless steel frame
- grey PVC track cover



Flush service door

A service door for offices, special purpose areas and work spaces, it is designed as a throughway for personnel and can be installed in spaces where temperatures are similar.

One or two leaves

Thickness 40 mm

Dimensions :

from 2040x610 mm to 2440x2040 mm

Options

- kick plate at base of door
- panic bar kit
- door closer
- foot stop
- stainless steel sill for outside door
- oculus 600 x 300 mm
- organization chart
- stainless steel frame