



# Schott Termofrost AB

Glass doors and shelving systems for cold storage and deep freeze storage rooms.



# Achieve higher profitability on chilled and deep-frozen products with Schott Termofrost glass doors.



Frozen and chilled products are amongst the most demanding to deal with. In addition to requiring major investment, they are also associated with high operating costs, lots of handling and short life qualities.

Schott Termofrost's normal and low temperature door and frame systems offer a solution to the growing market for chilled and frozen foods and at the same time address the need for displaying the goods in an attractive, energy efficient and space saving way.

For operators who are interested in reducing their costs relating to sales and storage, these products offer opportunities to achieve higher profit margins. Schott Termofrost's normal and low temperature door and frame systems offer a solution to maximise display of

products and their point of sale impact, and at the same time are energy efficient and space saving. By utilising a vertical display, effective use is made of the shop area.

- High food quality – food stored at a constant temperature
- Low energy consumption – energy efficient
- Space saving – maximised and attractive display

These benefits will become increasingly significant in the future as the food quality issue gains momentum, the price of energy rises and the cost per square metre within stores increases.

## A SELLING DISPLAY

Schott Termofrost glass doors are supplied with integrated lighting, matched to highlight the colour and shape of the products in the best possible way.

Glass doors help to create a large display area and combined with a shelving system, you get a well-arranged and attractive point of sale which will increase your sales.

## CUT YOUR ENERGY COSTS BY HALF

Cold storage rooms featuring Schott Termofrost glass doors give substantially lower energy costs than those with an open refrigeration air curtain. This represents a saving that has a direct effect on profitability for your chilled products, and you also take greater responsibility for the environment.



The glass door solution also means a lower total investment in the cold storage room.

## MORE EFFECTIVE HANDLING

You can combine storage with display in the cold storage room. A versatile shelving system with a facility for replenishing from the rear guarantees the principle of first in, first out, and also minimises wastage and handling times.

With a vertical display you can also make better use of the expensive shop area.

## THE RIGHT TEMPERATURE

Sensitive chilled products have a better chance of always maintaining the right temperature behind Schott Termofrost glass doors. Your volume of wastage will be reduced, and customers will be able to buy fresher products.

# Our production process makes our glass doors unique

Schott Termofrost is the leading manufacturer of coated and electrically heated glass for glass doors in Europe. A unique production process that makes it possible for us to maintain a high level of quality throughout the entire manufacturing chain, from raw glass intake to complete condensation-free door assemblies for cold storage rooms.

With more than 30 years experience of cold storage technology and glass production, we have acquired a great deal of knowledge as to how you can effectively separate cold from warm.

## TOUGHENED GLASS – 5-YEAR GUARANTEE

Toughened glass is used in all Schott Termofrost's doors. Continuous development work is carried out in the laboratory and the performance of products is examined under uneven load and slam tests. We offer a 5 year guarantee of no condensation between glass panels on all models.



## APPROVAL

Schott Termofrost fronts for cold storage rooms are CE-marked according to European regulations.

---

## Schott Termofrost AB – for all your needs

### Schott Termofrost AB – standard assortment

The Schott Termofrost AB standard assortment covers a complete range of insulated glass doors for both normal cold storage and deep freeze storage rooms. The doors are available in two heights – 1601 and 1801 mm – and two widths – 660 and 760 mm, suitable for use in supermarkets as well as in smaller shops.

Schott Termofrost AB standard assortment is supplied in frame modules with 1 to 4 doors in each frame (five door frame module can be ordered on request). The integrated lighting gives a well spread and attractive light over the whole display area.

The doors are self-closing and reversible (right-hand hinged is standard) with toughened safety glass. The frame and door frame are manufactured from nature anodised aluminum.

### For deep freeze storage rooms

Schott Termofrost AB models for deep freeze storage rooms are designed for storing products at temperatures as low as -25 C°. Combined with the Flexi-Shelf shelving system, you get an elegant and practical display of frozen products, and you can make more effective use of the shop area. Customers will feel more confident that your products are being stored at the right temperature, and you will achieve major saving in energy compared with open gondolas.

Schott Termofrost AB models for deep-freeze storage (LT model) feature a 3-pane glass door with toughened inner and outer glass panes. Heating cables in the frame and door frame, and electrically heated glass eliminate condensation.

### For cold storage rooms

Schott Termofrost AB models for cold storage rooms are our most common models for displaying dairy products, drinks, flowers, and other similar products that need to be stored at temperatures as low as +4 C°.

Combined with the Flexi-Shelf shelving system, you get an elegant and practical display of frozen products, and you can make more effective use of the shop area.

The cold storage model is available in two versions, with or without heating in the frame and door frame. Heating cables are not usually required for keeping the glass free from condensation (the NT model) but, where the ambient conditions are more demanding with higher temperatures or air humidity, you should choose the NTH model which can also be used in cold storage rooms at temperatures as low as +2 C°.

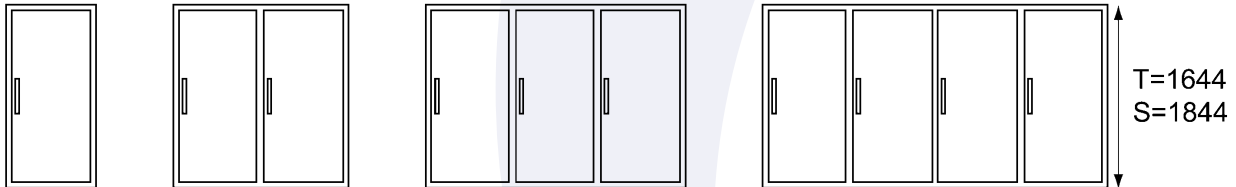


# Schott Termofrost AB – Standard models

The Schott Termofrost AB standard assortment covers a complete range of insulated glass doors for both normal cold storage and deep freeze storage rooms. The doors are available in two heights – 1601 and 1801 mm – and two widths – 660 and 760 mm.



## Modules



Note! Five door module available on request.

## Model designations

| Type | Temperature             | Heating cables                  |
|------|-------------------------|---------------------------------|
| NT   | Cold storage room + 4 C | None                            |
| NTH  | Cold storage room + 2 C | In door and frame               |
| LT   | Deep-freeze room - 25 C | In door and frame, heated glass |

Lighting is included in all models

## Door dimensions

| Model | Door       | Pass through openings |
|-------|------------|-----------------------|
| T 66  | 660 x 1601 | 590 x 1521            |
| T 76  | 760 x 1601 | 691 x 1521            |
| S 66  | 660 x 1801 | 590 x 1721            |
| S 76  | 760 x 1801 | 691 x 1721            |

When there are more than 4 doors, the table is to be used for installation dimensions based on 4-door modules combined with 1,2 or 3-door modules.

## Installation dimensions

Width: For different number of doors – see table below

Height: For model T = 1644mm  
for model S = 1844mm

| No. of frames | No. of Door | Doors |       |
|---------------|-------------|-------|-------|
|               |             | 660   | 760   |
| 1             | 1           | 712   | 813   |
|               | 2           | 1383  | 1585  |
|               | 3           | 2054  | 2357  |
| 2             | 4           | 2725  | 3129  |
|               | 5           | 3477  | 3982  |
|               | 6           | 4148  | 4754  |
| 3             | 7           | 4819  | 5526  |
|               | 8           | 5490  | 6298  |
|               | 9           | 6242  | 7151  |
| 4             | 10          | 6913  | 7323  |
|               | 11          | 7584  | 8695  |
|               | 12          | 8255  | 9467  |
| 5             | 13          | 9007  | 10320 |
|               | 14          | 9678  | 11092 |
|               | 15          | 10349 | 11864 |
| 6             | 16          | 11020 | 12636 |
|               | 17          | 11772 | 13489 |
|               | 18          | 12443 | 14261 |
| 7             | 19          | 13114 | 15033 |
|               | 20          | 13785 | 15805 |

# Roll-In

Roll-In is ideally installed in cold storage rooms where you want to be able to handle and manoeuvre heavy container trolleys through the door openings.

These are very practical for use in cold storage rooms with limited space, and also when you want to increase the storage capacity behind the shelving system.

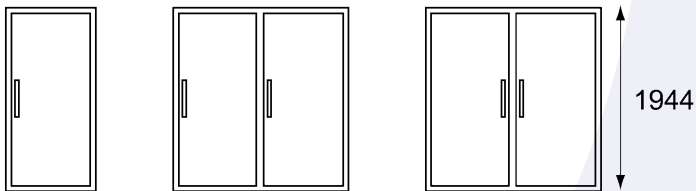
The Roll-In is 1903 mm high, and is installed without a foundation. Supplied in three different modules with single door, twin doors, or as a pair of doors without any centre pillar, this gives maximum display area and extensive freedom to handle containers.

The doors are self-closing and have condensation-free, toughened safety glass. Lighting is included.

Roll-In helps to simplify handling of containers and gives large storage capacity in the cold storage room.



## Roll-In is available in three different models



Note! Three door modules can be ordered on request.

### Model designations

| Type    | Temperature            | Heating cables |
|---------|------------------------|----------------|
| Roll-In | Cold storage room + 4C | None           |

Lighting is included in Roll-In

### Door dimensions

| Model | Door       | Pass through openings* |
|-------|------------|------------------------|
| R 66  | 660 x 1903 | 590 x 1878             |
| R 76  | 760 x 1903 | 691 x 1878             |

\*When the threshold is cut, the height is increased by 6 mm.

### Installation dimensions

Width: For different number of doors – see table below  
Height: 1944mm

| No. of frames | No. of doors | Combinations of modules | Width 660 | Width 760 |
|---------------|--------------|-------------------------|-----------|-----------|
| 1             | 1            | 1                       | 712       | 813       |
|               | 2            | 2                       | 1381      | 1585      |
| 2             | 3            | 2+1                     | 2133      | 2438      |
|               | 4            | 2+2                     | 2802      | 3210      |
| 3             | 5            | 2+2+1                   | 3554      | 4063      |
|               | 6            | 2+2+2                   | 4223      | 4835      |
| 4             | 7            | 2+2+2+1                 | 4975      | 5688      |
|               | 8            | 2+2+2+2                 | 5644      | 6460      |
| 5             | 9            | 2+2+2+2+1               | 6396      | 7313      |
|               | 10           | 2+2+2+2+2               | 7065      | 8085      |

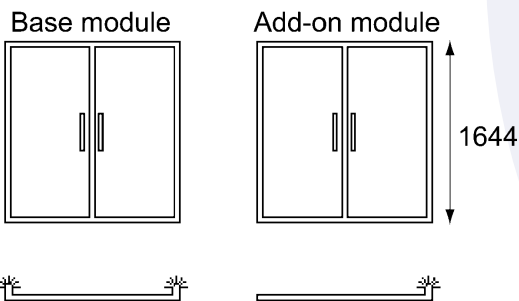
# Maxi-Twin



Maxi-Twin is the ideal cold storage room door for small provision shops and roadside shops. Featuring two 45 cm doors in pairs, you can achieve a large exposure and display area without the doors obstructing manoeuvrability in the shop when they are open.

In small shops with a slower rate of product turnover it is naturally very important to keep running costs low and prevent products from perishing as a result of being stored at the wrong temperature. Maxi-Twin offers you a good, safe, and effective solution for your cold storage rooms. The doors are also module matched to 45 cm dairy containers.

Maxi-Twin is supplied with pairs of doors as an introductory module, or as an add-to module with 2-pane toughened safety glass.



## Model designations

| Type | Temperature            | Heating cables |
|------|------------------------|----------------|
| NT   | Cold storage room + 4C | None           |

*Lighting is included*

## Door dimensions

| Model     | Door       | Pass through openings |
|-----------|------------|-----------------------|
| Maxi Twin | 428 x 1601 | 790 x 1521            |

## Installation dimensions

Width: For different number of doors – see table below

Height: 1644mm

| No. of frames | Width | No. of doors |
|---------------|-------|--------------|
| 1             | 900   | 2            |
| 2             | 1800  | 4            |
| 3             | 2700  | 6            |
| 4             | 3600  | 8            |
| 5             | 4500  | 10           |
| 6             | 5400  | 12           |

# Flexi Shelf

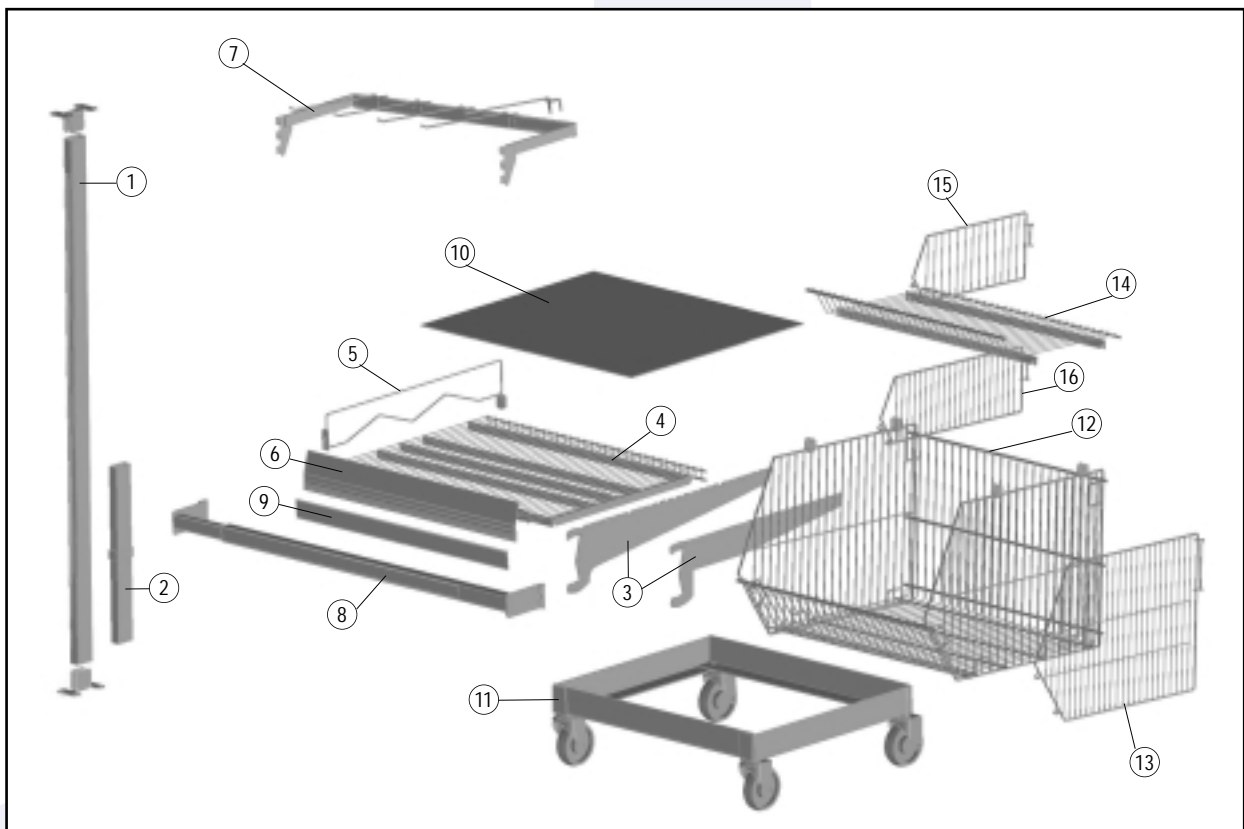
An elegant and versatile shelving system for storing chilled and frozen products. Flexi Shelf allows you to create an attractive and logical display and makes replenishing of stocks and warehouse handling all that much easier.

Flexi Shelf is a complete system, with accessories including telescopic container stop, price marking strip, article code strip, pin-pack, impact basket on carrier, etc. Flexi Shelf is tailor-made to Schott Termofrost door widths and easy to install.

Flexi Shelf is replenished from the rear, which ensures the principle of first in – first out. Add self-feeding gravity shelves and you will always have a well-stocked display front. You will also be able to see directly when the shelves in the cold storage room need replenishing.



## The parts included in Flexi-Shelf



- 1. Post, complete
- 2. Post, extension
- 3. Bracket, adjustable
- 4. Wire shelf
- 5. Divider
- 6. Front/rear stop

- 7. Pin pack system
- 8. Containerstop
- 9. Price marking strip
- 10. Gravity plate
- 11. Wire basket trolley
- 12. Wire basket

- 13. Divider for wire basket
- 14. Wire basket shelf
- 15. Divider for basket shelf, upper
- 16. Divider for basket shelf, lower

Schott Termofrost AB  
Korpralsvägen  
Box 991  
SE-671 29 Arvika Sweden  
Phone: +46 (0)570 472 00  
Fax: +46 (0)570 211 47  
E-mail: [info.termofrost@schott.com](mailto:info.termofrost@schott.com)

**SCHOTT**  
glass made of ideas